



**PAMBANSANG KALIPUNAN NG MGA MANGGAGAWANG IMPORMAL SA PILIPINAS
(PATAMABA, Inc.)**

Unit 2-D Palmario Apt. #101 Balingasa Rd., Brgy. Balingasa, Balintawak, Quezon City, Philippines

May 21, 2022

Dear Prime Minister,

We, Pambansang Kalipunan ng mga Manggagawang Impormal sa Pilipinas (PATAMABA, Inc.), National Network of Informal Workers in the Philippines, a partner organisation to We Effect, write to you to express our deep concerns on the decision to dramatically cut Sweden's official development assistance.

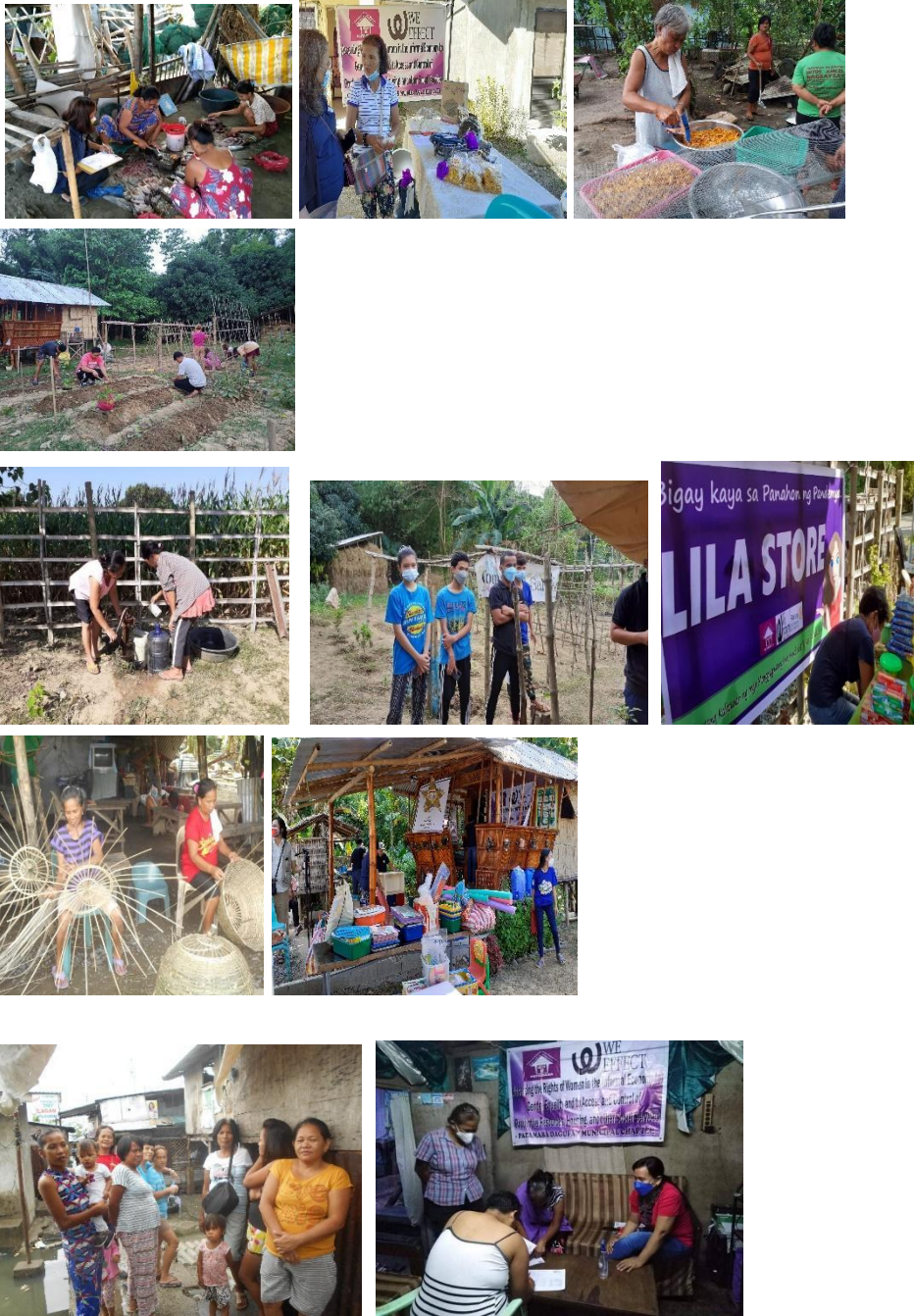
The war in Ukraine has underlined how severely vulnerable groups are affected in times of crisis. Already enduring the economic effects of the Covid-19 pandemic and the climate crisis, people in poverty are now suffering from skyrocketing food and oil prices.

The Secretary-General of the UN warns that 1,7 billion people – one fifth of the world's population– are at risk of hunger and poverty. The world is in the worst humanitarian situation since World War II. Nearly half of humanity lives in the danger zone of the climate crisis.

We, Philippine development organizations, bear witness of the UN reports. With this in mind, the historic and tragic decision to cut the development assistance will impact us in unprecedented ways. For us, the cut has drastic implications/effect.

- Dramatic cuts to salaries of project staff and allowances of community organizers and the eventual reduction on the number of community organizers – all creating impact on project implementation and meeting the programme objectives.
- Reduced resources for capability building on organizing, economic empowerment and political empowerment, as well as for communications, meetings, and monitoring of project areas creating impact on project continuity and sustainability.
- Reduced resources to support social enterprise initiatives for social preparation of members of PATAMABA Housing Cooperative. Social enterprise projects in three (3) areas that are providing support to build back lives to the members affected by calamities and the pandemic are affected. These social enterprises are affected:
 - Marinated milkfish production
 - Sweet Potato Chips production
 - Sweet Potato Production
 - Communal garden expansion
 - Lila Store (Community Pantry)
 - Bamboo Production

- Tulong Dunong Center (Tutorial Center)
- Support for the basic needs of the project team, local organisers, and local area facilitators are affected. Support for their family and basic needs for food, medicine, education plummeted.



Dear Magdalena, as Sweden's prime minister and leader of your government, we know you are a strong believer in international solidarity. We can't thank you enough for the support your country has given in the past.

We now encourage you to stand with us in these desperate times and re-evaluate the decision to cut development assistance, to make sure that the consequences of the war in Ukraine and the climate crisis will be as limited as possible.

Show your full support to civil society organisations and people in poverty that we support. Your financial support is needed more than ever. It is a long-term investment in a more sustainable and just world.

We look forward to your reply.

Sincerely,

LOURDES A. GULA
National President